



King Edward VI Grammar School

Examination Results 2009

Examination results

We are, of course, very proud of the academic achievements of our students at King Edward VI Grammar School, but we are always striving to do better and we also recognise and celebrate the many other ways in which students can succeed.

2008-2009 Key Stage 3 Levels awarded to Year 9

	W	1	2	3	4	5	6	7	8	EP	Number of Pupils
English	0	0	0	0	0	0	10	50	41	11	112
Maths	0	0	0	0	0	0	1	9	81	21	111
Science	0	0	0	0	0	0	17	59	29	7	112
Modern foreign language	0	0	0	0	0	20	55	32	4	0	111
D.T.	0	0	0	0	0	3	58	34	16	1	112
Geography	0	0	0	0	0	7	42	38	13	12	112
History	0	0	0	0	0	0	2	31	62	16	111
ICT	0	0	0	0	1	4	45	62	0	0	112
Art	0	0	0	0	0	18	47	25	13	9	112
Music	0	0	0	0	0	6	71	25	8	1	111
PE	0	0	0	0	2	36	64	8	1	0	111

Notes

- W represents pupils who are working towards level 1, but have not yet reached the standards needed for level 1.
- EP represents exceptional performance.
- * represents pupils who were not entered for the tests because they were working below level 3 in Maths or Science, or below level 4 in English; pupils awarded a compensatory level from the tests; and pupils entered for but not achieving a level from the tests.
- Figures may not total 100% because of rounding.

2008-2009 GCSE Results achieved by Year 11

Pupils Aged 15	Achieving 5+ A*-C Including English & Maths	Achieving 5+ A*-G
KEGS Pupils	%	%
School 2009	100	100
School 2008	100	100
Essex Average		
2009	Not available	Not available
2008	49.0	92.2
England Average		
2009	Not available	Not available
2008	47.6	91.6

The following page provides more detailed information about the GCSE results at KEGS.

2008-2009 GCSE Results at KEGS by Subject

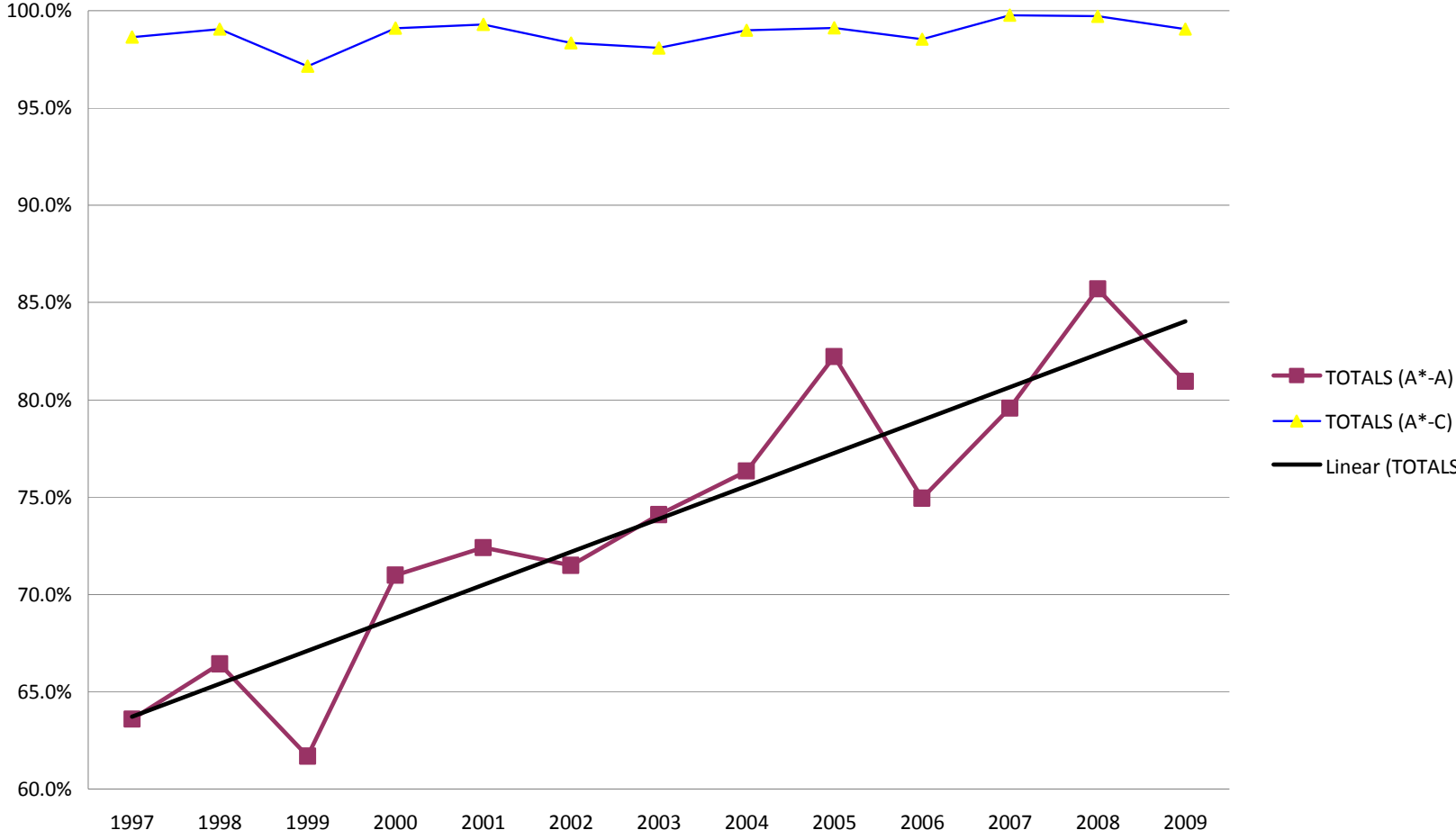
SUBJECT	NO.	A*	A*-A	A*-B	A*-C	A*-D	A*-E	A*-F	A*-G	Avg.Pt. Score	v Other Subjects
English	112	32%	76%	98%	100%	100%	100%	100%	100%	52	-1.0
English Lit.	111	56%	95%	98%	99%	99%	99%	99%	99%	55	1.3
Maths	112	59%	97%	100%	100%	100%	100%	100%	100%	55	2.3
Statistics	77	69%	100%	100%	100%	100%	100%	100%	100%	56	1.9
Biology	111	48%	79%	96%	100%	100%	100%	100%	100%	53	0.5
Chemistry	111	64%	87%	98%	100%	100%	100%	100%	100%	55	2.1
Physics	111	46%	78%	94%	100%	100%	100%	100%	100%	53	0.3
French	59	27%	68%	90%	98%	100%	100%	100%	100%	51	-2.1
German	77	32%	56%	87%	96%	100%	100%	100%	100%	50	-2.8
Latin	16	19%	69%	100%	100%	100%	100%	100%	100%	51	-2.8
Economics	74	28%	92%	99%	100%	100%	100%	100%	100%	53	0.2
Geography	77	47%	81%	99%	100%	100%	100%	100%	100%	54	0.1
History	84	49%	82%	96%	96%	98%	99%	99%	100%	53	0.2
Resistant Materials	29	24%	69%	90%	100%	100%	100%	100%	100%	51	-1.1
Graphics	14	0%	21%	64%	79%	93%	100%	100%	100%	43	-6.1
Electronics	14	50%	79%	100%	100%	100%	100%	100%	100%	54	0.1
Music	33	33%	76%	91%	100%	100%	100%	100%	100%	52	-2.4
Art	32	41%	88%	100%	100%	100%	100%	100%	100%	54	0.3
Drama	13	0%	8%	46%	92%	92%	92%	100%	100%	42	-8.0
PE	32	53%	94%	100%	100%	100%	100%	100%	100%	55	0.5
RE(SC)	74	23%	69%	89%	99%	99%	99%	99%	99%	25	n/a

Number of pupils aged 15: 112

Avg. Pts. Score = Average Points Score (A*=58, A=52, B=46, C=42 etc. for Full Course; A*=29, A=26, B=23 for Short Course)

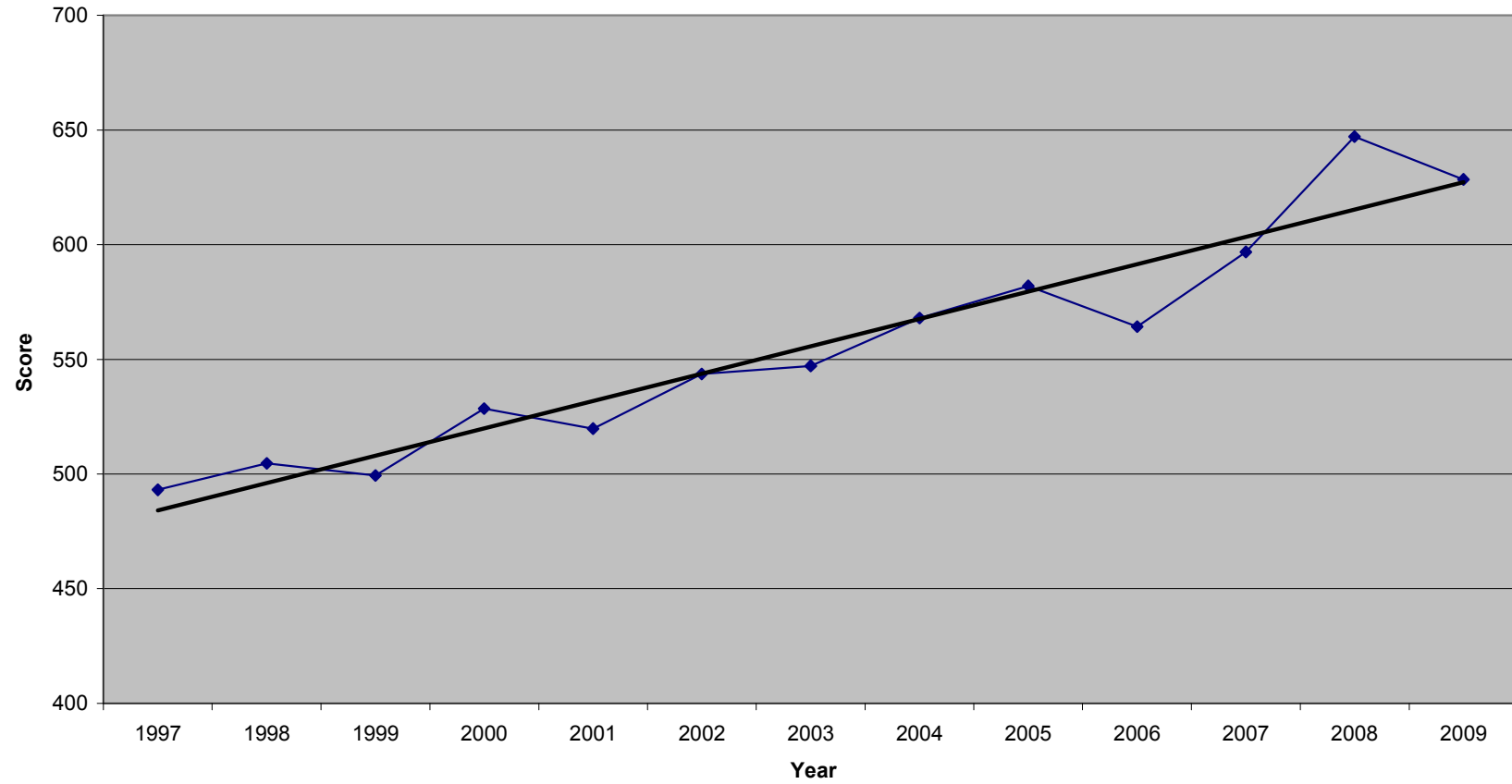
v Other Subjs. = How a student's grade in a subject compared with their other exam results, with relative weightings taken into account concerning subject difficulty (positive score = better in subject X than their other subjects; negative score = worse).

King Edward VI Grammar School GCSE Results

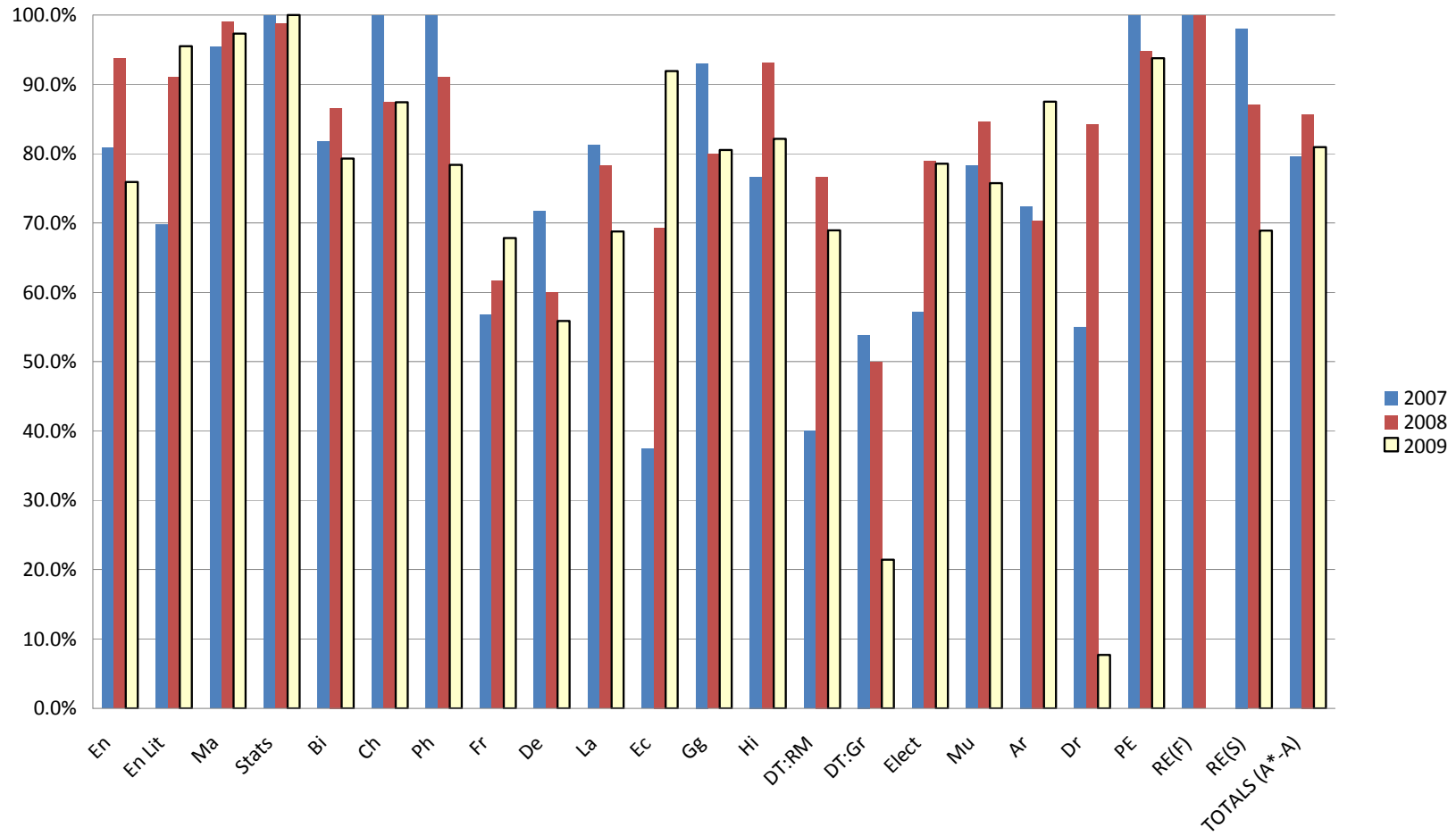


GCSE Average Total Points Score Per Student

(A*=58, A=52, B=46 etc.)



A*-A GCSE Results by Department at King Edward VI Grammar 2007-2009



2008-2009 A Level Results achieved by Year 13

The tables below set out the scoring mechanism for A and AS level results and King Edward VI Grammar School's performance for the 2008-9 academic year respectively. Comparative figures for local Borough and National averages are not yet available.

GCE — AS Grades	GCE —A Level Grades	Score
	A	120
	B	100
	C	80
A	D	60
B		50
C	E	40
D		30
E		20

Grades achieved by pupils are multiplied by the points noted above and aggregated. The totals reflected in the table below reflect the 2007/8 A level scores plus pupils AS level achievements for subjects which they chose to drop at the end of Year 12.

Points distribution %

SCORE	0-299 points %	300- 349 %	350-399 points %	400-449 points %	450-499 points %	500-549 points %	550-599 points %	600 + points %
100%	4	1	5	15	18	19	16	22

AVERAGE SCORE per CANDIDATE = 508 points

2008-2009 A Level (A2) Results at KEGS by Subject

Number of pupils in Year 13: 160

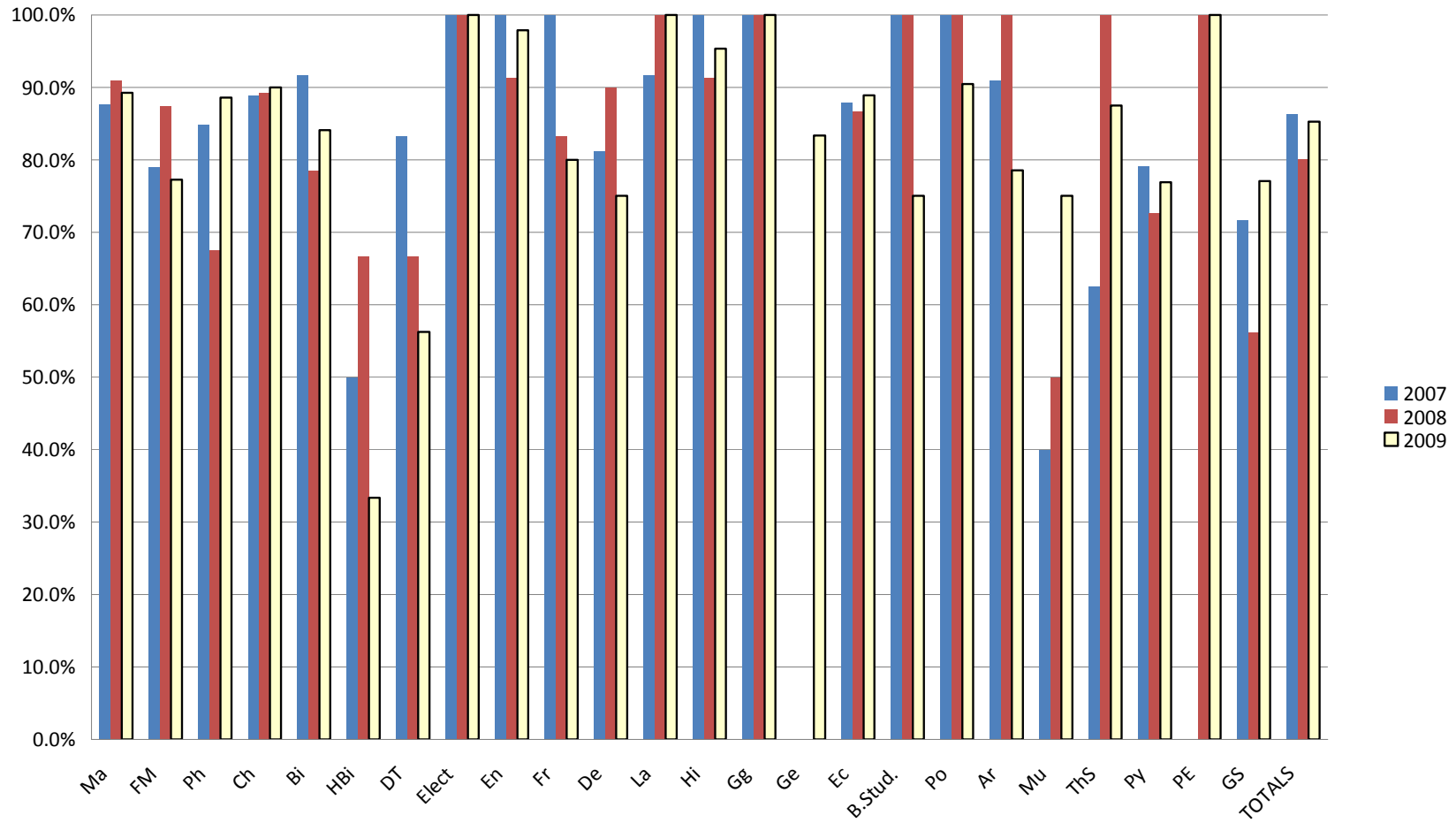
	TOTAL	A*-A%	A*-B%	A*-C%	A*-D%	A*-E%	Avg. Pts.	Dept. Avg. - Sch. Avg.
Maths	93	74%	89%	98%	100%	100%	258	8.2
Further Maths	22	55%	77%	86%	86%	100%	241	-8.8
Physics	35	49%	89%	91%	100%	100%	249	-1.6
Chemistry	60	68%	90%	97%	98%	100%	256	5.8
Biology	44	55%	84%	95%	100%	100%	250	0.0
Human Biology	6	33%	33%	50%	67%	100%	205	-45.2
D.T.	16	31%	56%	88%	100%	100%	233	-17.7
Electronics	6	100%	100%	100%	100%	100%	270	19.8
English	47	77%	98%	98%	100%	100%	262	11.5
French	15	40%	80%	100%	100%	100%	246	-4.2
German	8	50%	75%	100%	100%	100%	248	-2.7
Latin	2	50%	100%	100%	100%	100%	255	4.8
History	43	51%	95%	100%	100%	100%	254	3.7
Geography	37	86%	100%	100%	100%	100%	266	15.7
Geology	6	67%	83%	100%	100%	100%	255	4.8
Economics	36	33%	89%	92%	100%	100%	244	-6.0
Business Studies	8	13%	75%	88%	100%	100%	233	-17.7
Politics	21	71%	90%	100%	100%	100%	259	8.4
Art	14	79%	79%	100%	100%	100%	257	6.9
Music	4	50%	75%	100%	100%	100%	248	-2.7
Drama	8	38%	88%	100%	100%	100%	248	-2.7
Philosophy	26	38%	77%	92%	96%	100%	241	-9.1
P.E.	12	33%	100%	100%	100%	100%	250	-0.2
Gen. Studies	157	55%	77%	91%	96%	97%	242	-8.3

Avg. Pts. Score = Average Points Score based on UCAS points (A=120, B=100, C=80, D=60, E=40)

King Edward VI Grammar School A Level Grades 2004-2009



'A-B' A Level Grades by Department at King Edward VI Grammar School 2007-2009



2008-2009 A Level (AS) Results at KEGS by Subject

Number of pupils in Year 12: 160

	ALL	A%	A-B%	A-C%	A-D%	A-E%
Maths	82	49%	72%	84%	95%	99%
Further Maths	0	0%	0%	0%	0%	0%
Physics	43	56%	74%	95%	100%	100%
Chemistry	71	46%	82%	99%	99%	99%
Biology	63	43%	78%	87%	97%	98%
D.T.	5	0%	40%	80%	100%	100%
Electronics	2	100%	100%	100%	100%	100%
English	52	58%	77%	92%	98%	98%
French	23	48%	78%	96%	96%	100%
German	8	50%	50%	100%	100%	100%
Latin	7	57%	71%	86%	86%	100%
History	66	76%	95%	100%	100%	100%
Geography	41	88%	98%	98%	100%	100%
Geology	2	50%	100%	100%	100%	100%
Economics	56	38%	64%	91%	96%	98%
Politics	25	88%	92%	92%	96%	96%
Art	8	50%	100%	100%	100%	100%
Music	7	57%	86%	86%	100%	100%
Drama	7	29%	71%	86%	100%	100%
Philosophy	25	36%	92%	96%	100%	100%
P.E.	4	75%	100%	100%	100%	100%
Gen. Stud.	160	73%	95%	98%	100%	100%
Other	1	100%	100%	100%	100%	100%
TOTALS	758	59%	83%	94%	98%	99%

Avg. Pts. Score = Average Points Score based on UCAS points (A=120, B=100, C=80, D=60, E=40)

King Edward VI Grammar School AS Level Grades 2001-2009

